

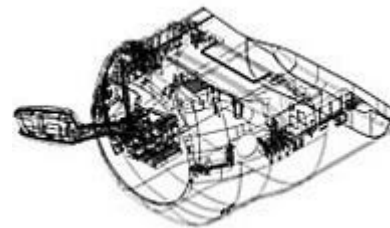
# SCGM doo



## *From idea to real product*

SCGM doo is a multinational enterprise (mixed German – Serbian), basically offering services of construction and production mainly towards the European market.

Long-term experience based on article construction and design of plastic parts and assemblies for the most eminent companies in area of automotive industry, medical engineering, electrical – electronic industry at all, made SCGM to be a reliable partner to each company which wants to realize its business-idea on the market



[www.scgm.com](http://www.scgm.com)

# SCGM doo

## History :

2004 - SCGM doo was founded in Kragujevac

2005 - established Toolshop, Molding department and Assembly department

2007 - Changing location and increasing production space (2.000 m<sup>2</sup>)

2008 - Implementation of 2-component injection molding

- Company is certified with ISO 9001:2001

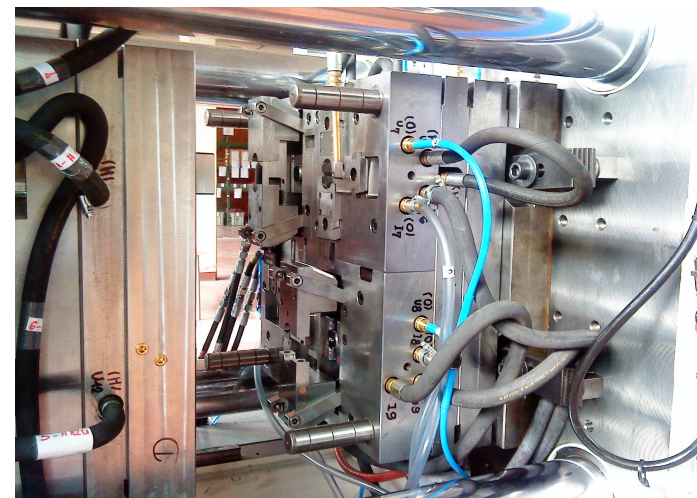
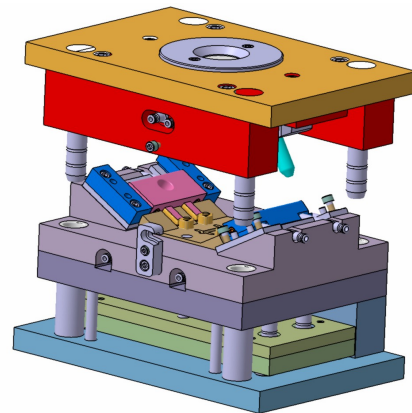
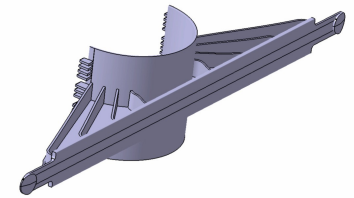
Today SCGM has 40 employees which support our success with necessary know-how and enthusiasm.



# SCGM doo

The company SCGM covers a large field of services:

- service of article design ( CATIA V5R18 )
- service of rapid prototyping ( FDM and prototype tools)
- service of mold making (for prototype and series production)
- production of plastic parts
- assembly



# SCGM doo

Our toolshop machines :

## CNC Milling machines

- Mikron VCP 1350
- Mikron UM600
- TOS FNG 40

## Conventional milling machine

- Maho 800

## Eroding machines

- Charmilles Roboform 20 CNC (electrode)
- D. Hansen 750C NC (electrode)
- Agie AC100 CNC ( wire eroding machine)

## Other machines

- turning machine (TOS)
- grinding machines ( JUNG, BLOHM)



# SCGM doo

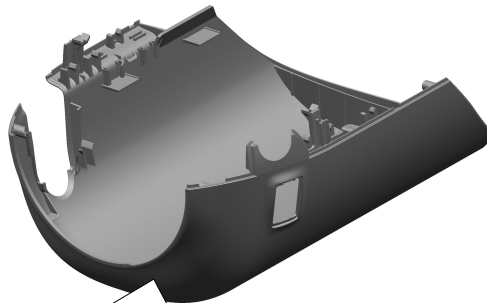
Our molding machines :

- Battenfeld Plus 350 (20 tons)
- Battenfeld HM40/130 (40 tons)
- Battenfeld TM 1000/350 (100 tons)
- Battenfeld BK 1300/315 (130 tons)
- Battenfeld BK 2500/800 (250 tons)
- Krauss Maffei 160/180/55 CXZ (2K)

Since second half of 2008. SCGM doo has implemented two-components injection molding



# Realized projects



**BMW** - wheel cover  
- molding prototype tool  
- production 200 samples  
- total time : 6 weeks

**HENKEL** - Germany  
- 2 molding tools  
- production 300.000 pcs.  
- assembly



**Philips** – Netherland  
Housing for ICS  
Redesign, 3 series tools  
Prototypes and production



**Swisslog** - Germany  
First waterproof tube used in  
pneumatic tube transport  
system (hospitals etc)  
Development, prototypes,  
5 tools, two with overmolding  
(PP+TPE).  
Spin welding technology applied  
(PC pipe and PC part)

**Woodhead - MOLEX**  
Several types of industrial  
connectors  
Tools and production



# SCGM doo

- Our customers

saia-burgess

swisslog

KOSTAL

satisloh

AVAYA

W Woodhead  
A Division of molex

seca



ZF Lenksysteme



PEG

SOLUTIONS  
Branding & Design Companies



PHILIPS



# Die SCGM d.o.o.

## Location

19. oktobra 2

SRB-34000 Kragujevac

## Contact

Telefon: +381 34 304 560

Telefax: +381 34 304 561

eMail: [office@scgm.com](mailto:office@scgm.com)

Web: [www.scgm.com](http://www.scgm.com)

