



Regional Economic Development Agency for Sumadija and Pomoravlje



European Commission
TEMPUS



TERRITORY

Two districts: Šumadija and Pomoravlje



Operational Grant for Regional Agency for Economic Development of Sumadija and Pomoravlje
A EU funded project managed by Delegation of the European Commission





MISSION

- **Regional agency for development of small and medium enterprises – may 2002. – september 2005.**
- **Regional Economic Development Agency for Šumadije and Pomoravlje Region – september 2005.**





FOUNDERS

Legal status – Non profit Ltd

Government Municipalities Associations NGO RCC KG

- | | | |
|---|---|---|
| <ul style="list-style-type: none"> ➤ Aranđelovac ➤ Batočina ➤ Knić ➤ Kragujevac ➤ Lapovo ➤ Rača ➤ Topola ➤ Despotovac ➤ Jagodina ➤ Rekovac ➤ Svilajnac | <ul style="list-style-type: none"> ➤ Association Sloga ➤ Association Šumadija | <ul style="list-style-type: none"> ➤ Baština i budućnost ➤ Šumadijska inicijativa |
|---|---|---|

73% of ownership – public sector

27% of ownership – private sector





SCOPE OF WORK

- **2002. – Entrepreneurship development**
- **2003. – Entrepreneurship development, human resource development**
- **2005. – Entrepreneurship development, human resource development, support to local governments in the activation of local economy development, strategic planning of regional development**
- **2009. godine – Managing the development of Šumadija and Pomoravlje in five priority fields of development: SME development, HR development, infrastructure development, tourism development and rural development**





OPERATIVE PRIORITIES – 2009.

- **Support to territory development**
 - Rural development
 - Spatial planning as a precondition for investment allurements
 - Tourism development
- **Support to entrepreneurship development**
- **Support to HR development**
- **Strategic planning on local and regional category**





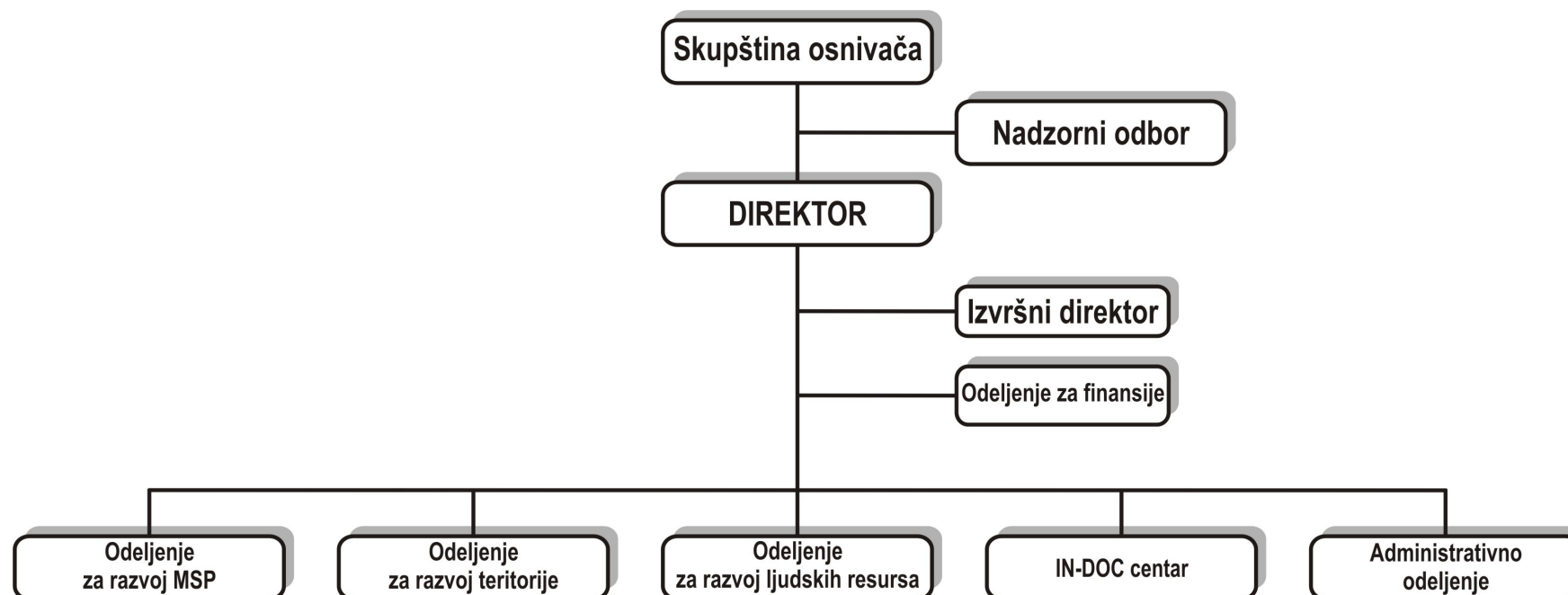
PROJECT IMPLEMENTATION

- **More than 30 implemented projects**
- **Value of implemented projects is approximately 7.000.000 euro**
- **Cooperation with a number of relevant multinational and national institutions: The Government of Serbia, The Delegation of the European Commission, E.A.R., The Government of Kingdom of Netherlands, USAID, UNDP, Southern Moravia Region from the Czech Republic.**





ORGANIZATIONAL STRUCTURE





ENTREPRENEURSHIP DEVELOPMENT

- Operative services –

- **Business information**
- **Business counseling**
- **Partner research**
- **Trainings**

Over 5.000 clients

Around 700 new enterprises

Over 2000 new jobs

- Strategic development mechanisms -

- **Financial support (guarantee fund, self-employment, micro credits)**
- **Associations (clusters)**
- **Innovation development – BIC**
- **New service development – mentoring**





CLUSTER DEVELOPMENT - NETWOOD

- **The Project was financed by E.A.R.**
- **Partnership with The Faculty of economics in Kragujevac**
- **Development of networks of companies and their associates**
- **Product development based on identified market demand**
- **National competition for design of new product line**
- **Awarded performance at the furniture fair in Belgrade in 2007**

